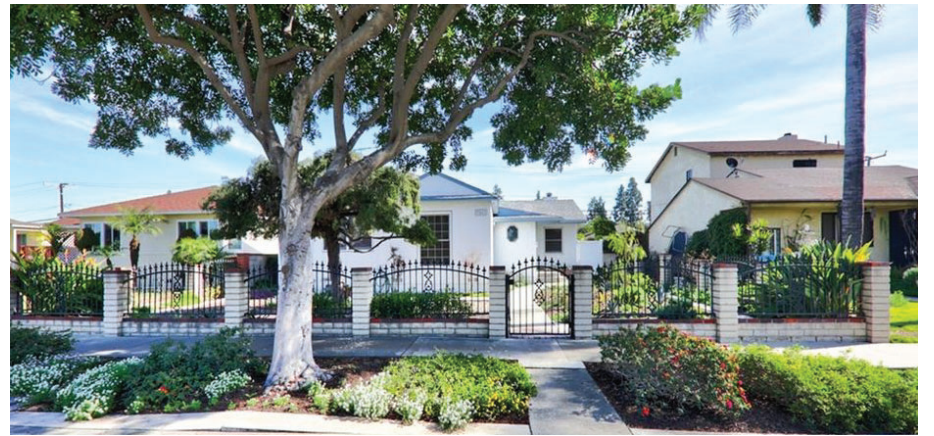




RE-IMAGINE Santa Fe Springs 2040 General Plan VISION

October 2020 Draft



Santa Fe Springs: A strong, diverse, and balanced community where our businesses thrive, neighborhoods offer many housing choices, and residents enjoy ready access to parks, transit, local-serving shops, restaurants, and entertainment destinations.

Our well-maintained neighborhoods, distinguished schools, commitment to public safety, and outstanding community services create an exceptional quality of life.

Our families live in Santa Fe Springs for many generations, choosing to raise children in a community that respects and responds to cultural values.

With a strong industrial sector as an economic foundation, we remain committed to providing a welcoming environment for businesses that contribute to the local tax base, offer well-paying jobs for skilled labor, and responsibly manage their environmental impacts locally and regionally.

As an active, participatory community, we engage in local government, participate in community events, and celebrate family-oriented activities and social gatherings within vibrant public spaces.

Our community is respectful and inclusive. Our governance values are to be accountable and transparent, while our leaders make decisions on behalf of the community with integrity, impartiality, and honesty.

Santa Fe Springs: An unparalleled place to enjoy life and to flourish as a community.



RE-IMAGINE Santa Fe Springs 2040 General Plan GUIDING PRINCIPLES

October 2020 Draft



Healthy and Safe Neighborhoods

Promote healthy and safe neighborhoods with comprehensive approaches that consider best practices around land use, mobility, housing, environmental justice, community services, and design. Expand housing choices around transit stations and corridors.



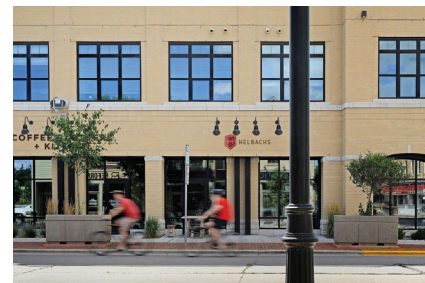
Economic Strength and Local Businesses

Strengthen the City's industrial and office sectors while increasing and diversifying commercial businesses.



Downtown

We strive for a downtown that showcases our rich history, celebrates local entrepreneurship, features our civic institutions, and encourages downtown living within a vibrant gathering place for the community.



Diversified Economy

Support a diversified economy with a balance of small and large businesses across a broad range of industries that provide employment, commercial, and experiential opportunities.



RE-IMAGINE

Santa Fe Springs 2040 General Plan

GUIDING PRINCIPLES

October 2020 Draft



Environmental Justice and Community Safety

Improve environmental conditions, noise conditions, and air and water quality for all residents and people working in the City by minimizing the impacts of industrial businesses, truck and commuter traffic, and contaminated lands.



Clean and Sustainable Environment

Insist upon remediation of contaminated land and take steps to prevent pollution from the different processes involved in industrial business operations. Make rational use of natural resources to support environmental responsibility and the collective health of residents, employees, and visitors.



Adaptive and Resilient Community

Protect people, infrastructure, and community assets from evolving climate threats and vulnerabilities, and from natural and human-caused hazards.



Equitable and Inclusionary

Engage residents and stakeholders in ensuring equitable and inclusive processes, policies, investments, and service systems. Our residents in disadvantaged communities have access to healthy foods, parks, mobility options, public services, and safe homes.



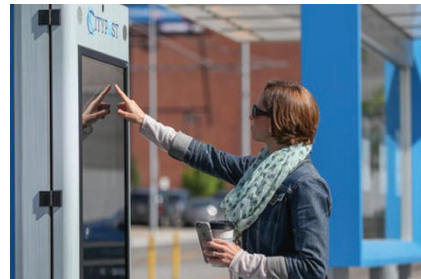
RE-IMAGINE Santa Fe Springs 2040 General Plan GUIDING PRINCIPLES

October 2020 Draft



Active and Diverse Transportation

Create an interconnected, active transportation system that recognizes and responds to the critical needs of businesses to move commerce while accommodating the equally important necessity for pedestrians, cyclists, transit users, and motorists to move around the City with convenience and ease.



Technology

Embrace technology and innovative practices where digital technology and intelligent design can be harnessed to create smart, sustainable cities and adaptable infrastructure systems.