

# City of Santa Fe Springs 2040 General Plan Update and Targeted Zoning Code Amendment



## Community Workshop #1

September 16, 2020 | Zoom Video Conferencing

# Live Spanish Interpretation

- For live Spanish interpretation, **participants** must dial:
  - Phone Number: **1-605-475-2090**
  - and enter access Code: **5305564#**
- All text in Zoom provided in English. The interpreter will guide Spanish-speakers.

# Meeting Agenda

1. Introductions
2. Historical Transformation
3. What Is a General Plan?
4. Process and Schedule
5. Discussion
6. Next Steps
7. Public Comments

# Meeting Guidelines

- One person speaks at a time. Keep comments brief.
- Technology happens – please be flexible and patient.
- Be respectful of one another’s opinions.
- Please mute yourself when you’re not speaking.
- Share video so we can stay visually connected.
- Remember: This is just one meeting in a longer process.



2040 General Plan Update and Targeted Zoning Code Amendment

# INTRODUCTIONS



## Community Workshop #1

September 16, 2020 | Zoom Video Conferencing

# Project Team: City Staff



**Wayne Morrell:** Director of Planning

**Cuong Nguyen:** Senior Planner

**Laurel Reimer:** Contract Planner

**Jack Wong:** Planning Consultant

# Project Team: Consultants



**Laura Stetson:** Principal

**Jose M. Rodriguez:** Project Manager

**Genevieve Sharrow:** Project Manager

**Jessie Hernandez:** Associate

**Krystin Ramirez:** Associate (Spanish translation)

# Live Poll

## ***Are you a resident of the City of Santa Fe Springs?***

- A. Yes, I live in Santa Fe Springs
- B. No, I work in Santa Fe Springs
- C. I neither live nor work in Santa Fe Springs



2040 General Plan Update and Targeted Zoning Code Amendment

# HISTORICAL TRANSFORMATION



Community Workshop #1

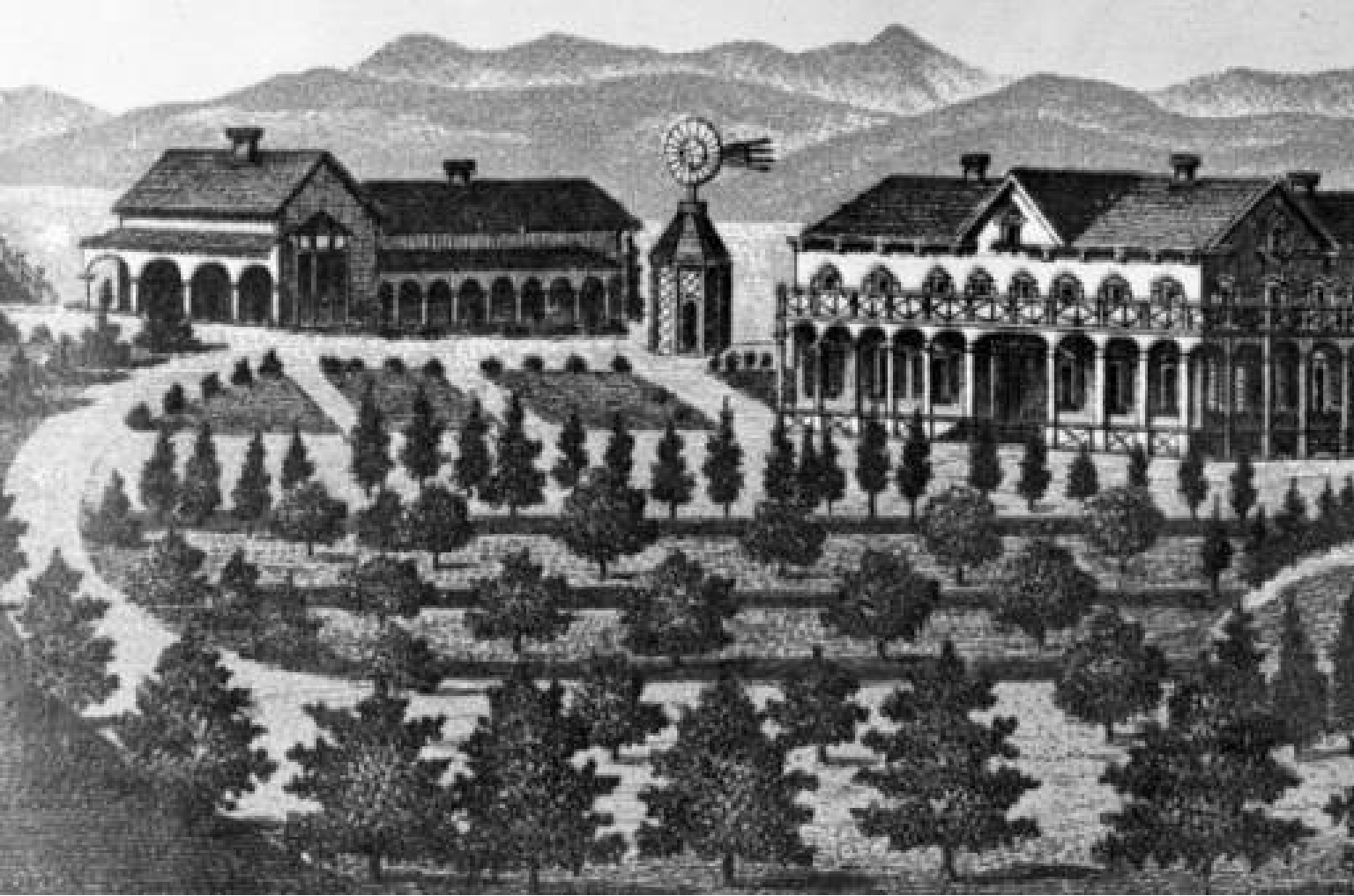
September 16, 2020 | Zoom Video Conferencing

# 1880s



Re-Imagine  
Santa Fe Springs

2040 GENERAL PLAN



Para escuchar en Español, marcar: 1-605-475-2090 y presione 5305564



1890s



Re-Imagine  
Santa Fe Springs

2040 GENERAL PLAN



Para escuchar en Español, marcar: 1-605-475-2090 y presione 5305564

# 1900s



Re-Imagine  
Santa Fe Springs

2040 GENERAL PLAN



Para escuchar en Español, marcar: 1-605-475-2090 y presione 5305564

# 1910s



Re-Imagine  
Santa Fe Springs

2040 GENERAL PLAN



Para escuchar en Español, marcar: 1-605-475-2090 y presione 5305564



# 1920s



Re-Imagine  
Santa Fe Springs

2040 GENERAL PLAN



Para escuchar en Español, marcar: 1-605-475-2090 y presione 5305564



1930s



Re-Imagine  
Santa Fe Springs

2040 GENERAL PLAN



Para escuchar en Español, marcar: 1-605-475-2090 y presione 5305564

# 1940s



Re-Imagine  
Santa Fe Springs

2040 GENERAL PLAN



Para escuchar en Español, marcar: 1-605-475-2090 y presione 5305564



# 1950s



Re-Imagine  
Santa Fe Springs

2040 GENERAL PLAN



Para escuchar en Español, marcar: 1-605-475-2090 y presione 5305564

1960s



Re-Imagine  
Santa Fe Springs

2040 GENERAL PLAN



Para escuchar en Español, marcar: 1-605-475-2090 y presione 5305564

# 1970s



Re-Imagine  
Santa Fe Springs

2040 GENERAL PLAN



Para escuchar en Español, marcar: 1-605-475-2090 y presione 5305564

# 1980s



Re-Imagine  
Santa Fe Springs

2040 GENERAL PLAN



Para escuchar en Español, marcar: 1-605-475-2090 y presione 5305564



2000s



Re-Imagine  
Santa Fe Springs

2040 GENERAL PLAN



Para escuchar en Español, marcar: 1-605-475-2090 y presione 5305564



2010s



Re-Imagine  
Santa Fe Springs

2040 GENERAL PLAN



Para escuchar en Español, marcar: 1-605-475-2090 y presione 5305564



# Today



Re-Imagine  
Santa Fe Springs

2040 GENERAL PLAN



Para escuchar en Español, marcar: 1-605-475-2090 y presione 5305564



# Today



Re-Imagine  
Santa Fe Springs

2040 GENERAL PLAN



Para escuchar en Español, marcar: 1-605-475-2090 y presione 5305564



# Today



Re-Imagine  
Santa Fe Springs

2040 GENERAL PLAN



Para escuchar en Español, marcar: 1-605-475-2090 y presione 5305564



# Today



Re-Imagine  
Santa Fe Springs

2040 GENERAL PLAN



Para escuchar en Español, marcar: 1-605-475-2090 y presione 5305564



# Today



Re-Imagine  
Santa Fe Springs

2040 GENERAL PLAN



Para escuchar en Español, marcar: 1-605-475-2090 y presione 5305564



# Reimagine Tomorrow



2040 GENERAL PLAN





2040 General Plan Update and Targeted Zoning Code Amendment

# WHAT IS A GENERAL PLAN?



Community Workshop #1

September 16, 2020 | Zoom Video Conferencing

# A General Plan....

- **Belongs to the community** and reflects local vision and values
- **Long-term plan** for maintenance and change
- **A “living” document** that can be adjusted over time
- **Comprehensive**
  - Required elements
  - Defined planning area and/or subareas
  - Planning horizon of 15 to 25 years

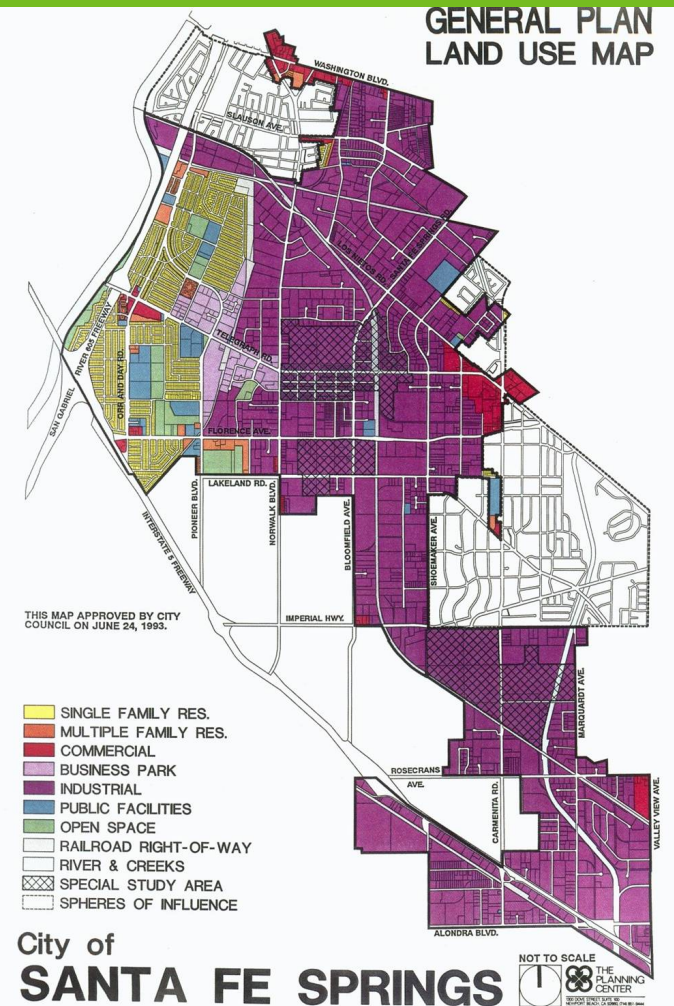
# Current General Plan



Re-Imagine  
Santa Fe Springs

2040 GENERAL PLAN

- Land Use Element - 1993
- Housing Element (2014-2021) - 2014
- Open Space/Conservation Element - 1994
- Safety Element - 1994
- Circulation Element - 1994
- Noise Element - 1994





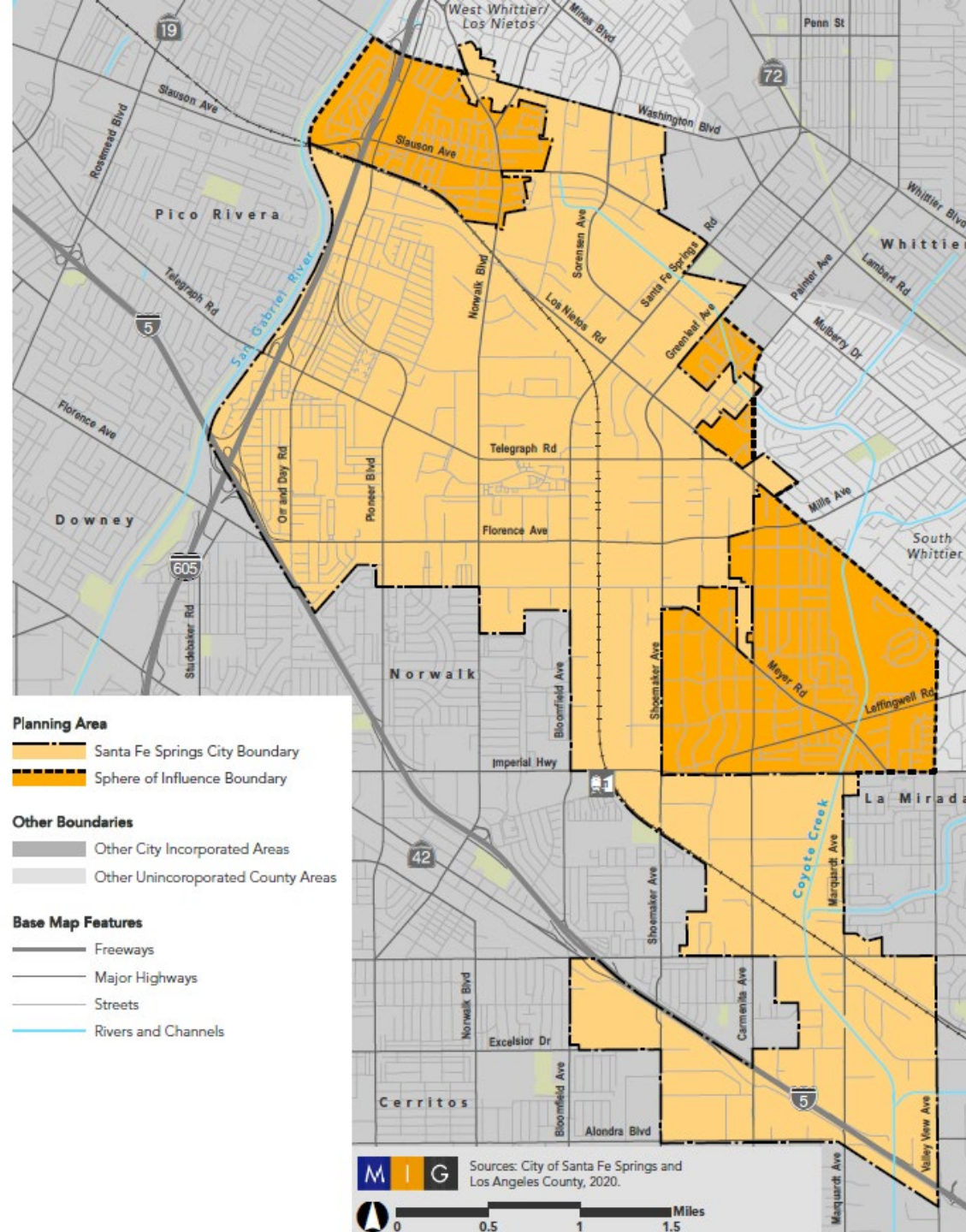
# Why Update?

- Set new vision, goals, and policies
- Address current opportunities, challenges, and trends
- Changes to demographics and economic environment since 1990s
- Opportunity to connect with the community and reaffirm values and priorities
- Changes to State law on how cities address housing, mobility, climate change, and environmental justice



# Planning Area

- Incorporated City Boundary
- Sphere of Influence (County of Los Angeles)
  - West Whittier/Los Nietos
  - South Whittier





# Key General Plan Topics

- Economic Development
- Land Use and Housing
- Transportation
- Environmental Justice (Health and Safety)
- Open Space and Conservation





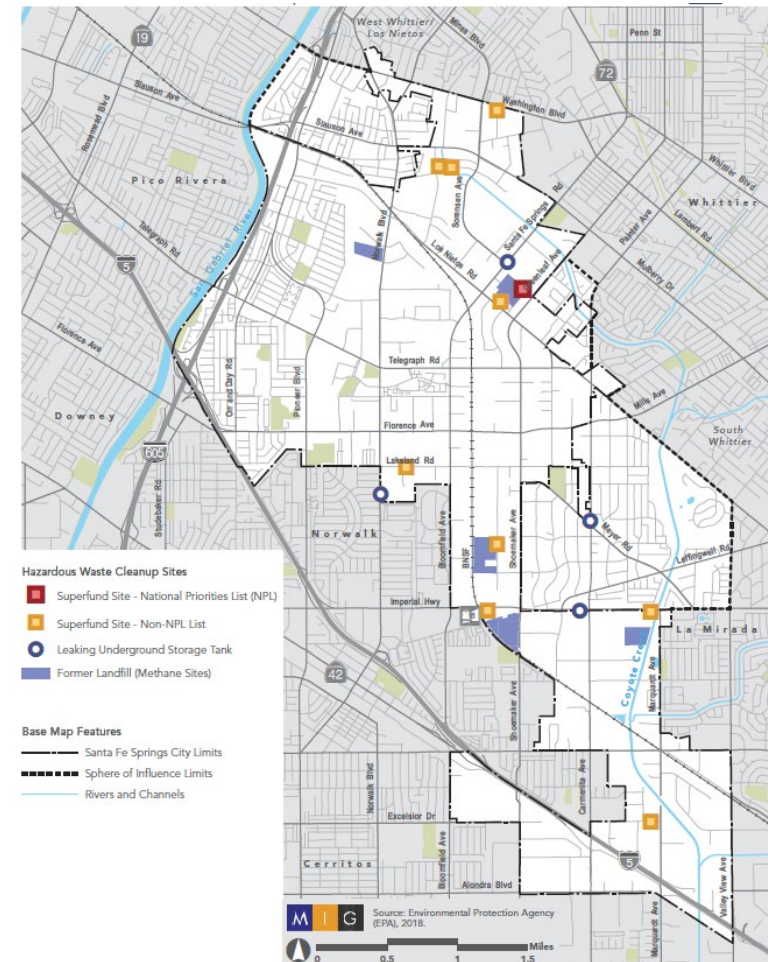
# Housing

- Address the housing crisis by expanding housing opportunities
- Housing Element: required to plan for its share of statewide housing
- Identify places where new housing may be built



# Environmental Justice: Health and Safety

Environmental Justice is the **fair treatment and meaningful involvement of all people** regardless of race, color, national origin, or income with respect to the development, implementation, and enforcement of environmental laws, regulations, and policies





# Environmental Justice: Health and Safety

## Pollution Exposures and Environmental Effects:



Poor air quality and vehicle/truck emissions



Toxic releases and hazardous waste



Ground water threats and drinking water contaminants



Toxic cleanup sites and solid waste facilities

# Environmental Justice: Health and Safety

## Sensitive Populations



Asthma emergency room visits



Cardiovascular disease



Low-birth weight

## Socioeconomic Factors



Poverty



Education levels



Language barriers



Housing cost burden



2040 General Plan Update and Targeted Zoning Code Amendment

# PROCESS AND SCHEDULE

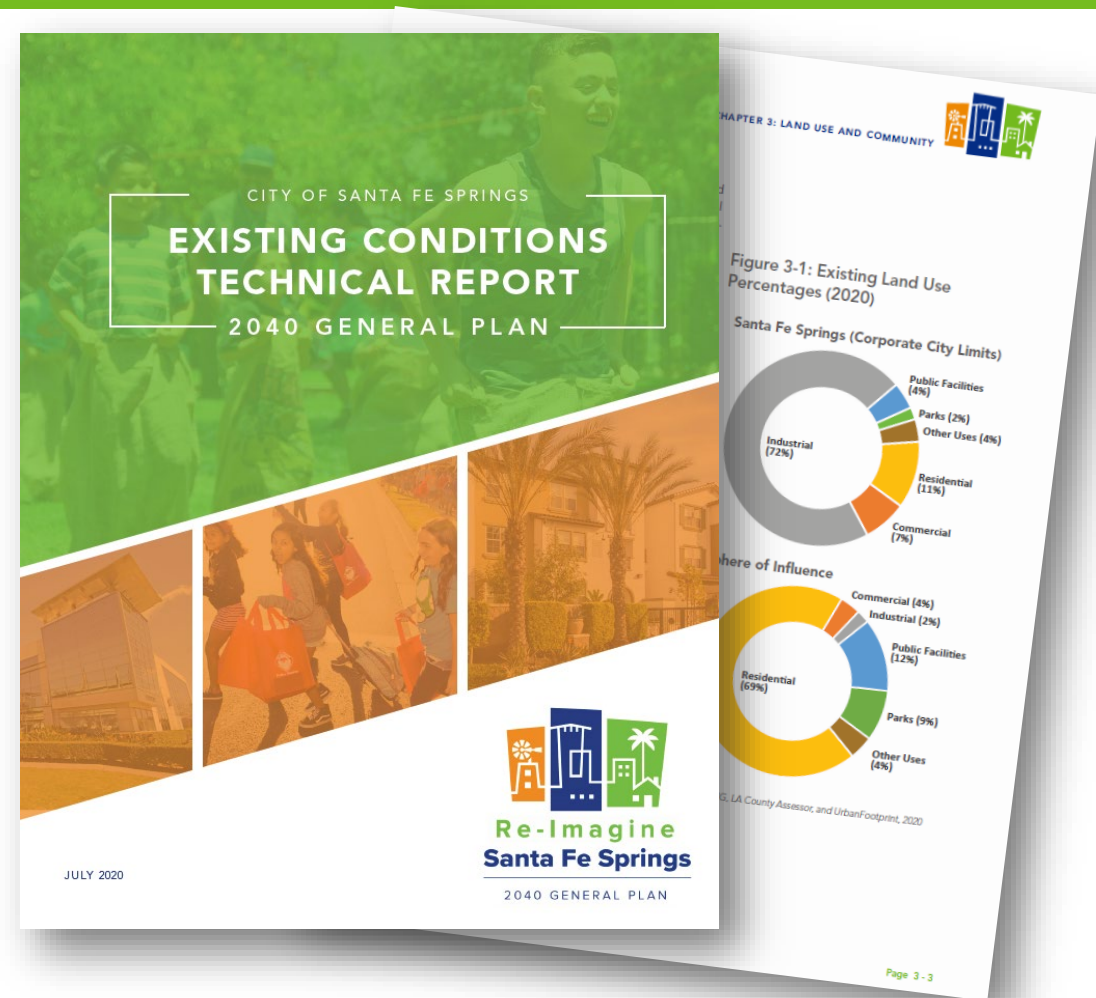


## Community Workshop #1

September 16, 2020 | Zoom Video Conferencing

# Understanding Current Conditions

- Land Use and Demographics
- Traffic and Circulation Study/Community Needs Assessment
- Market Study
- Housing Opportunities Evaluation
- Zoning Consistency Analysis



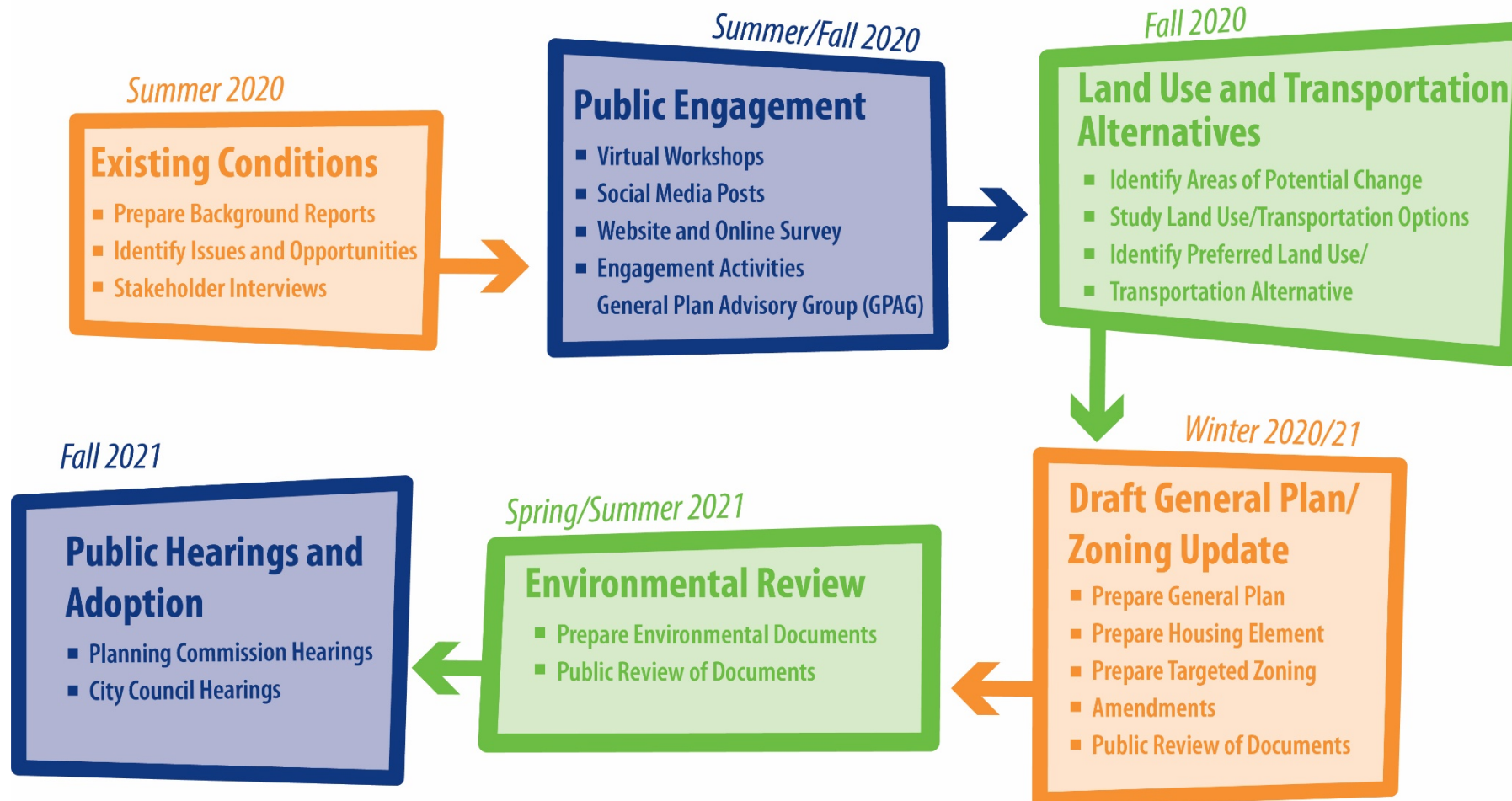


# Public Engagement

- General Plan Advisory Group (GPAG)
- Stakeholder/focus group interviews
- Website
- Online community surveys
- Intercept/events meetings
- Community workshops



# Process and Schedule





2040 General Plan Update and Targeted Zoning Code Amendment

# DISCUSSION



## Community Workshop #1

September 16, 2020 | Zoom Video Conferencing

2040 General Plan Update and Targeted Zoning Code Amendment

# NEXT STEPS



## Community Workshop #1

September 16, 2020 | Zoom Video Conferencing

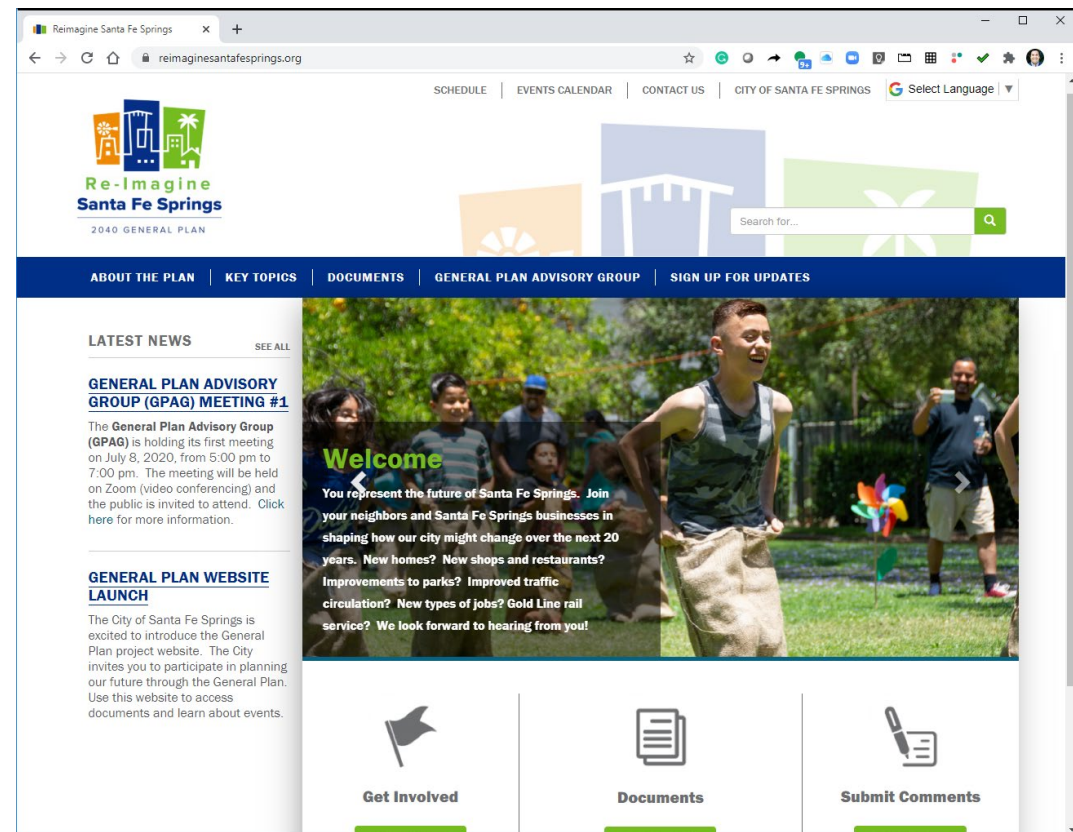


# Next Steps

## Stay Involved!

- Visit our website
- Take our survey
- Sign up for updates

[www.ReimagineSantaFeSprings.org](http://www.ReimagineSantaFeSprings.org)

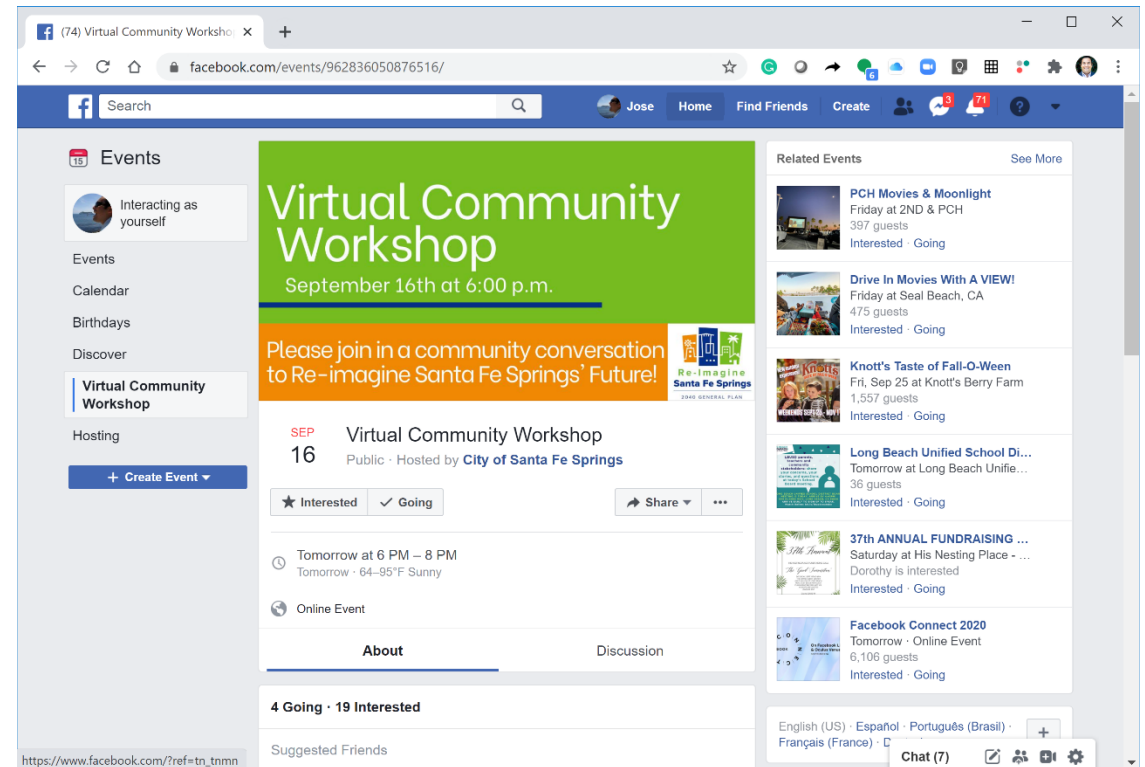
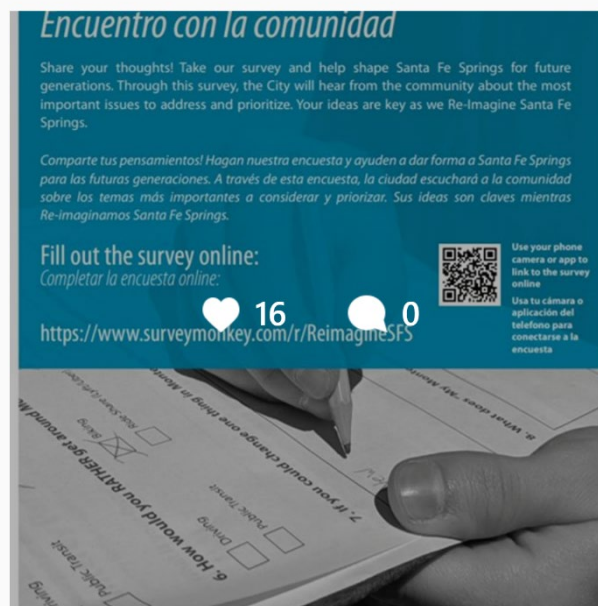


# Next Steps

## Social Media – City accounts



Instagram



Facebook



# City of Santa Fe Springs 2040 General Plan Update and Targeted Zoning Code Amendment



## Community Workshop #1

September 16, 2020 | Zoom Video Conferencing